



MISSOURI LION



Liberty • Intelligence • Our Nation's Safety

VOL 6, NO. 1

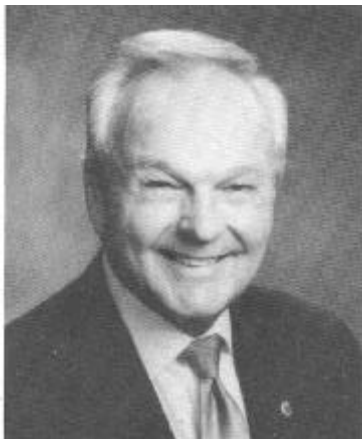
MULTIPLE DISTRICT 26 BULLETIN

February 2001

SOME DIVERSIONS AT THE STATE CONVENTION

Welcome to St. Joseph, Missouri, a friendly family city of 76,000 located in northwest Missouri on the Missouri River. We invite all Missouri Lions and their families to enjoy the friendly atmosphere, sights and sounds of St. Joseph.

St. Joseph's rich history is on display at the Albrecht-Kemper Museum of Art which houses one of the finest collections of 18th, 19th, and 20th century American Art in the Midwest; the Buchanan County Courthouse, a rare example of courthouse design from the late 1800s period of architectural history and is on the National Register of Historic Places; Glore Psychiatric Museum, a nationally recognized as "one of the 50 most unusual Museums in the county;" Hall Street Historic District, also listed on the National Register of Historic Places, where the homes symbolize the prosperity and optimism of St. Joseph's "Golden Age;" Historic Downtown with many historically significant buildings; Jesse James Home Museum, where Jesse James was shot and killed on April 3, 1882; Knea-Von Black Archives, where visitors travel through a simulated underground railroad to a room devoted solely to national black leaders and pioneers; Krug Park, with



Lion Donald E. Banker, PIP 1991-92 will be our Convention Speaker.

over 150 acres encompassing a natural amphitheater, lagoon, rose garden, ponds, and scenic walking trails; Lovers Lane, a beautiful winding street immortalized in poetry by Eugene Field; Missouri Theater, a classic example of a "Palace" theatre of the 1920s; Missouri Valley Trust Building, built in 1859, this stone and brick structure was the oldest building west of the Mississippi continuously in use for baking purposes; Mount Mora Cemetery, established in 1851, is the oldest operating cemetery in St. Joseph and three Missouri governor, three generals, one of the first Pony Express riders, and an English knight are among those buried there; Museum Hill Historic District, embodies distinctive characteristics of a middle to upper-class residential neighborhood during the last half of the 19th and early 20th century; National Military heritage Museum, a tribute to all branches of the Armed Forces and their contributions to the United States ranging from the Civil War to modern day; Patee House Museum, was built as an elegant 140-room hotel in 1858 to serve the expanding west; Pony Express Monument, a bronze statue of a Pony Express rider to commemorate the pioneer spirit exhibited by St. Joseph more than a century ago when the

over 150 acres encompassing a natural amphitheater, lagoon, rose garden, ponds, and scenic walking trails; Lovers Lane, a beautiful winding street immortalized in poetry by Eugene Field; Missouri Theater, a classic example of a "Palace" theatre of the 1920s; Missouri Valley Trust Building, built in 1859, this stone and brick structure was the oldest building west of the Mississippi continuously in use for baking purposes; Mount Mora Cemetery, established in 1851, is the oldest operating cemetery in St. Joseph and three Missouri governor, three generals, one of the first Pony Express riders, and an English knight are among those buried there; Museum Hill Historic District, embodies distinctive characteristics of a middle to upper-class residential neighborhood during the last half of the 19th and early 20th century; National Military heritage Museum, a tribute to all branches of the Armed Forces and their contributions to the United States ranging from the Civil War to modern day; Patee House Museum, was built as an elegant 140-room hotel in 1858 to serve the expanding west; Pony Express Monument, a bronze statue of a Pony Express rider to commemorate the pioneer spirit exhibited by St. Joseph more than a century ago when the

over 150 acres encompassing a natural amphitheater, lagoon, rose garden, ponds, and scenic walking trails; Lovers Lane, a beautiful winding street immortalized in poetry by Eugene Field; Missouri Theater, a classic example of a "Palace" theatre of the 1920s; Missouri Valley Trust Building, built in 1859, this stone and brick structure was the oldest building west of the Mississippi continuously in use for baking purposes; Mount Mora Cemetery, established in 1851, is the oldest operating cemetery in St. Joseph and three Missouri governor, three generals, one of the first Pony Express riders, and an English knight are among those buried there; Museum Hill Historic District, embodies distinctive characteristics of a middle to upper-class residential neighborhood during the last half of the 19th and early 20th century; National Military heritage Museum, a tribute to all branches of the Armed Forces and their contributions to the United States ranging from the Civil War to modern day; Patee House Museum, was built as an elegant 140-room hotel in 1858 to serve the expanding west; Pony Express Monument, a bronze statue of a Pony Express rider to commemorate the pioneer spirit exhibited by St. Joseph more than a century ago when the

C. WAYNE HENDERSON MEMORIAL YOUTH SERVICE AWARD

Recognizing that the youth of today are our future, the Council of Governors, at their January 2001 meeting, voted to institute an award to recognize individuals actively involved in Youth Services.

The C. Wayne Henderson Memorial Youth Service Award may be bestowed by a club, district or individual through a \$500 donation made to the Missouri



WAYNE HENDERSON

Lions Youth Outreach Committee in an individual's name. Monies generated by this award will be added to Youth Outreach funding to be used at the discretion of the State Youth Outreach Committee, with the approval of the Council of Governors.

Hopefully, the first award will be presented at the State Convention in St. Joseph.

Pony Express originated in 1860; Pony Express Museum, featuring "The Moment in Time" when the first horse and rider were preparing to leave on the first leg to a 2,000 mile trek to California to deliver the mail; Robidoux Row Museum, built in 1843 by Joseph Robidoux, the founder of St. Joseph; St Joseph Museum, housed in a 19th century mansion featuring Native American collection, St. Joseph history and natural history; Society of Memories Doll Museum, with 600 dolls ranging from "covered wagon dolls" to present-day Barbies and Cabbage Patch Kids; and Twin Spires Religious History Museum, one of the finest examples of St. Joseph's architecture with breathtaking stained-glass windows from Innsbruck, Austria and unique to northwest Missouri.

The east side of St. Joseph features

East Hills Mall with many fine stores, and there are many unique shops and specialty stores all with friendly faces and welcoming smiles. St. Joseph boasts many fine restaurants for dining, and for those of you who wish to try your luck, you can enjoy the sights and sounds of the Frontier Casino.

The four Lions Clubs of St. Joseph, Missouri welcome you to St. Joseph for this year's State Convention. We hope that you will enjoy your stay with us.

The **Registration Form** for the **State Convention** is on page 6 of this Bulletin. Fill it out, send it in and make your hotel reservations **NOW**