

PHELPS COUNTY

EMERGENCY

OPERATIONS

PLAN

PHELPS COUNTY
EMERGENCY OPERATIONS PLAN

Prepared by

DEPARTMENT OF PUBLIC SAFETY
STATE EMERGENCY MANAGEMENT AGENCY

In Conjunction With

PHELPS COUNTY EMERGENCY MANAGEMENT AGENCY

And

COUNTY AND CITY OFFICIALS

DECEMBER 2003

**PHELPS COUNTY EMERGENCY OPERATIONS PLAN
SUGGESTED DISTRIBUTION LIST**

1.	Phelps County Commission	1
2.	Mayors: Rolla, St. James, Newburg, Doolittle, Edgar Springs	5
3.	Emergency Management Directors	5
	Phelps County, Rolla, St. James, Doolittle, Newburg	
4.	County Sheriff.....	1
5.	County Clerk.....	1
6.	County Highway & Bridge Superintendent	1
7.	County Coroner	1
8.	City/Rural Fire Departments/Districts	8
	Rolla Rural FD, Rolla City FD, St. James FD, Doolittle FD, Edgar Springs FD, Newburg FD, Jerome FD, Duke FD	
9.	Ambulance Districts: Phelps County, St. James	2
10.	Phelps County Regional Medical Center	1
11.	Phelps County Division of Family Services	1
12.	Phelps County Health Department	1
13.	Phelps County Chapter American Red Cross	1
14.	Municipal Law Enforcement: Rolla, St. James, Newburg.....	3
15.	Meramec Regional Emergency Planning Committee (LEPC)	1
16.	Missouri Emergency Response Commission (MERC).....	1
17.	Mo. State Highway Patrol, Troop I, Rolla	1
18.	University of Missouri-Rolla.....	1
19.	Phelps County Public Library	1
20.	State Emergency Management Agency.....	1
21.	Extra Copies	5
	Total Copies	43

FOREWORD

- A. This plan outlines actions to be taken by local government officials and cooperating private or volunteer organizations to: 1) prevent avoidable disasters and reduce the vulnerability of county and city residents to any disasters that may strike; 2) establish capabilities for protecting citizens from the effects of disasters; (3) respond effectively to the actual occurrence of disasters; and 4) provide for recovery in the aftermath of any emergency involving extensive damage within the county.
- B. It is not the intent of this plan to attempt to deal with those events that happen on a daily basis, which do not cause widespread problems and are handled routinely by the city and/or county agencies. It does, however, attempt to deal with those occurrences such as tornadoes, earthquakes, hazardous materials incidents, etc., which create needs and cause suffering that the victims cannot alleviate without assistance, and that requires an extraordinary commitment of government resources.
- C. The Phelps County EOP was developed through the efforts of the County and City Emergency Management Directors with assistance provided by the State Emergency Management Agency. During the development, various agencies, organizations, and county and city governments were interviewed to discuss their roles, responsibilities, and capabilities in an emergency. This plan is a result of their input.
- D. The Phelps County EOP is a multi-hazard, functional plan, broken into three components: (1) a basic plan that serves as an overview of the jurisdiction's approach to emergency management, (2) annexes that address specific activities critical to emergency response and recovery, and (3) appendices which support each annex and contain technical information, details, and methods for use in emergency operations.
- E. The Basic Plan is to be used primarily by the chief executive and public policy officials of a jurisdiction but all individuals/agencies involved in the EOP should be familiar with it. The annexes are to be used by the operational managers and the appendices are for disaster response personnel.
- F. The contents of this plan must be understood by those who will implement it or it will not be effective. Thus, the County and City Emergency Management Directors will brief the appropriate county and city officials on their roles in emergency management. The Directors will also brief the newly employed officials as they assume their duties.
- G. Each organization/agency with an assigned task will be responsible for the development and maintenance of their respective segments of the plan (See Part IV of the Basic Plan). They will update their portion of the plan as needed based on experience in emergencies, deficiencies identified through drills and exercises, and changes in government structure and emergency organizations.

**PROMULGATION STATEMENT
PHELPS COUNTY**

Officials of Phelps County and its incorporated subdivisions, in conjunction with the State Emergency Management Agency, have developed an emergency operations plan that will enhance their emergency response capability. This document is a result of that effort.

This plan, when used properly, can assist local government officials in accomplishing one of their primary responsibilities, protecting the lives and property of their constituents. This emergency operations plan and its provisions will become official when it has been signed and dated below by the concurring government officials.

Presiding Commissioner
Phelps County

Date

Commissioner, First District
Phelps County

Date

Commissioner, Second District
Phelps County

Date

Emergency Management Director
Phelps County

Date

**PROMULGATION STATEMENT
DOOLITTLE**

Officials of Phelps County, in conjunction with the State Emergency Management Agency, have developed an emergency operations plan that will enhance their emergency response capability. This document is the result of that effort.

This plan, when used properly and updated annually, can assist local government officials in accomplishing one of their primary responsibilities—protecting the lives and property of their constituents. This plan and its provisions will become official when it has been signed and dated below by the concurring government officials.

Mayor
City of Doolittle

Date

Witness
City of Doolittle

Date

**PROMULGATION STATEMENT
EDGAR SPRINGS**

Officials of Phelps County, in conjunction with the State Emergency Management Agency, have developed an emergency operations plan that will enhance their emergency response capability. This document is the result of that effort.

This plan, when used properly and updated annually, can assist local government officials in accomplishing one of their primary responsibilities—protecting the lives and property of their constituents. This plan and its provisions will become official when it has been signed and dated below by the concurring government officials.

Mayor
City of Edgar Springs

Date

Witness
City of Edgar Springs

Date

**PROMULGATION STATEMENT
NEWBURG**

Officials of Phelps County, in conjunction with the State Emergency Management Agency, have developed an emergency operations plan that will enhance their emergency response capability. This document is the result of that effort.

This plan, when used properly and updated annually, can assist local government officials in accomplishing one of their primary responsibilities—protecting the lives and property of their constituents. This plan and its provisions will become official when it has been signed and dated below by the concurring government officials.

Mayor
City of Newburg

Date

Witness
City of Newburg

Date

**PROMULGATION STATEMENT
ROLLA**

Officials of Phelps County, in conjunction with the State Emergency Management Agency, have developed an emergency operations plan that will enhance their emergency response capability. This document is the result of that effort.

This plan, when used properly and updated annually, can assist local government officials in accomplishing one of their primary responsibilities—protecting the lives and property of their constituents. This plan and its provisions will become official when it has been signed and dated below by the concurring government officials.

Mayor
City of Rolla

Date

Witness
City of Rolla

Date

**PROMULGATION STATEMENT
SAINT JAMES**

Officials of Phelps County, in conjunction with the State Emergency Management Agency, have developed an emergency operations plan that will enhance their emergency response capability. This document is the result of that effort.

This plan, when used properly and updated annually, can assist local government officials in accomplishing one of their primary responsibilities—protecting the lives and property of their constituents. This plan and its provisions will become official when it has been signed and dated below by the concurring government officials.

Mayor
City of Saint James

Date

Witness
City of Saint James

Date

GLOSSARY OF TERMS AND ACRONYMS

Affiliated Volunteers: Usually individuals associated with and trained by a host agency prior to a disaster.

Biological Agents: Living organisms or materials derived from them that cause disease, harm humans, animals, or plants, or deteriorate materials.

CBRNE – Chemical, Biological, Radiological, Nuclear or Explosive device

CHEMTREC - Chemical Transportation Emergency Center

Chemical Agents: A chemical substance intended to kill, severely injure, or incapacitate people through psychological effects.

Contingency: For more effective planning, a construct that groups similar hazards and activities related to possible incidents.

Cyber Terrorism: “Malicious conduct in cyberspace to commit or threaten to commit acts dangerous to human life, or against a nation’s critical infrastructures...in order to intimidate or coerce a government or civilian population...in furtherance of political or social objectives.

Chief Executive Officer - The county commission or county supervisor or the mayor or other manager of the executive affairs of any city, town, village or fire protection district (RSMo Chapter 44).

Direction and Control Staff: Comprised of the functional coordinators found in each annex of this plan. The Direction and Control Staff are members of the overall EOC staff.

Disaster: For the purpose of the plan, a disaster can be described as any type situation that endangers life and property to a degree that a concentrated effort of emergency services be coordinated on a large scale to contain the situation. Examples would be tornados, floods, explosions, earthquakes, or large-scale civil disobedience.

Disaster Volunteering: Refers to all volunteer activities performed during any of the four phases of the emergency management (Mitigation, Preparedness, Response or Recovery).

DRC - Disaster Recovery Center: Place where disaster victims can come and find out what types of assistance are available to them. These centers will be manned by local, state, and federal agencies and organizations.

EAS - Emergency Alert System: A communication and warning system set by the federal government in order for emergency messages to be broadcast via radio and TV stations.

EOC - Emergency Operations Center: A centralized location where direction and control,

information collection is evaluated and displayed, where coordination among response agencies takes place, and resources managed.

EOP - Emergency Operations Plan

EPI - Emergency Public Information

Exercise: An activity designed to promote emergency preparedness; test or evaluate emergency operations plans, procedures or facilities; train personnel in emergency response duties, and demonstrate operational capability. There are three specific types of exercises: Tabletop, Functional, and Full Scale.

FEMA - Federal Emergency Management Agency: An agency established in 1979 which consolidated emergency agencies and functions into one organization.

FRP - Federal Response Plan

Functional Area: A major grouping of functions and tasks that agencies perform to carry out awareness, prevention, preparedness, response, and recovery activities.

Hazard Analysis: The process of identifying the potential hazards that could affect the jurisdiction and determine the probable impact each of these hazards could have on people and property.

HAZMAT - Hazardous Material

Hazardous Substances: Any substance or mixture of substances that presents a danger to public health, public safety, or the environment.

Incident: An occurrence in which hazards or threats result in harmful, dangerous or otherwise unwanted outcomes.

IMS – Incident Management System: A management tool consisting of procedures for organizing personnel, facilities, equipment, and communications at the scene of an emergency. Created under the National Response Plan, it replaces what was formerly known as the Incident Command System (ICS).

LEPC - Local Emergency Planning Committee

Local Government: A county, municipality, city, town, township, local public authority, school district, special district, intrastate district, council of governments, regional or interstate government entity, or agency instrumentality of a local jurisdiction. This term also applies to an Indian tribe or authorized tribal organization...It also applies to a rural community, unincorporated town or village, or other public entity. (As defined in Section 2 (10) of the Homeland Security Act of 2002, Pub. L. 107-296, 116 Stat. 2135, et seq. (2002).

MFDA - Missouri Funeral Directors Association
MULES - Missouri Uniform Law Enforcement System

NAWAS - National Warning System

NBC - Nuclear, Biological, or Chemical

NERRTC - National Emergency Response and Rescue Training Center

NRP – National Response Plan - to replace the FRP (Federal Response Plan)

PIO - Public Information Officer

SEMA - State Emergency Management Agency: Prepares and maintains state emergency operations plan, the state EOC and assists local government in developing and maintenance of their operations plans and centers. It is also responsible for radiological support, damage assessment and emergency public information.

SOG - Standard Operating Guidelines: A ready and continuous reference to those procedures which are unique to a situation and which are used for accomplishing specialized functions.

SOP - Standard Operating Procedure: A ready and continuous reference to those procedures which are unique to a situation and which are used for accomplishing specialized functions.

Safeguarding Vital Records: Measures by government that protect vital records the government must have to continue functioning during emergency conditions and to protect the rights and interests of citizens during and after the emergency.

Succession: The process established to list the order, line, or interim personnel entitled to succeed one another under emergency conditions.

Terrorism: The unlawful use of force or violence against persons or property to intimidate or coerce a government, the civilian population, or any segment thereof, in furtherance of political or social objectives.

Unaffiliated or Spontaneous Volunteers: Individuals or groups that arrive unsolicited at the scene of a disaster. They may or may not be a resident of the affected community. They may or may not possess skills necessary to respond to the current disaster. Also, they usually are not associated with any part of the existing emergency management system.

Voluntary Agencies: Organizations that utilize affiliated and often spontaneous volunteers to deliver disaster services.

WMD - Weapons of Mass Destruction

TABLE OF CONTENTS

PHELPS COUNTY
EMERGENCY OPERATIONS PLAN

	<u>Page</u>
SUGGESTED DISTRIBUTION LIST.....	ii
RECORD OF CHANGES.....	iii
FOREWORD.....	iv
PROMULGATION STATEMENTS.....	v
GLOSSARY OF TERMS AND ACRONYMS.....	xi
TABLE OF CONTENTS.....	xiv
BASIC PLAN	1
APPENDIX 1 - Phelps County Emergency Management Organization by Emergency Function	12
Attachment A - Municipal Emergency Management Organization By Emergency Function.....	13
APPENDIX 2 - Assignment of Responsibilities.....	14
Attachment A - Phelps County Functions & Responsibility Chart	15
Attachment B - Municipal Functions & Responsibility Chart.....	17
Attachment C - Tasks Assignments by Function	19
APPENDIX 3 - Emergency (Disaster) Classification and Control Procedures.....	24
APPENDIX 4 - Procedures for Requesting State and Federal Assistance	27
APPENDIX 5 - Phelps County Hazard Analysis	31
Attachment A - Earthquake Response	36
Addendum 1 - Projected Earthquake Intensities (Map).....	37
Attachment B - Phelps County Dam Inventory	38
Attachment C - National Flood Insurance Program Information.....	39
Attachment D - Callaway Nuclear Plant Emergency Planning Zones (Map)	40
APPENDIX 6 - Emergency Government Proclamation of a State of Emergency	41
ANNEX A - DIRECTION AND CONTROL	A-1
APPENDIX 1 - Direction and Control Diagrams (Phelps County and Municipalities).....	A-8
APPENDIX 2 - EOC Staffing Roster and Call-Up List	A-10
APPENDIX 3 - Message Handling Procedures	A-13
Attachment A - Message Form.....	A-14
Attachment B - Communications Log.....	A-15

Attachment C - Significant Events Log.....	A-16
APPENDIX 4 - EOC Standard Operating Guidelines.....	A-17
ANNEX B - COMMUNICATIONS AND WARNING	B-1
APPENDIX 1 - Communications and Warning Diagram.....	B-7
APPENDIX 2 - Communications and Warning Capabilities.....	B-8
ANNEX C - EMERGENCY PUBLIC INFORMATION	C-1
APPENDIX 1 - Emergency Public Information Diagram.....	C-6
APPENDIX 2 - Format and Procedures for News Releases.....	C-7
APPENDIX 3 - Statement of Understanding for Emergency Public Information Operations.....	C-8
APPENDIX 4 - News Media Contact Numbers	C-10
APPENDIX 5 - News Release Log.....	C-11
APPENDIX 6 - Sample News Releases	C-12
ANNEX D - DAMAGE ASSESSMENT.....	D-1
APPENDIX 1 - Damage Assessment Diagram.....	D-6
APPENDIX 2 - Disaster Assessment Form and Completion Instructions.....	D-7
APPENDIX 3 - Local Situation Report Form and Completion Instructions	D-10
ANNEX E - LAW ENFORCEMENT	E-1
APPENDIX 1 - Law Enforcement Diagram.....	E-6
APPENDIX 2 - Law Enforcement Resources	E-7
APPENDIX 3 - Relocation of Prisoners - Phelps County Jail	E-9
APPENDIX 4 - Search and Rescue Operations.....	E-10
APPENDIX 5 - Personnel/Equipment Inventory	E-12
ANNEX F - FIRE AND RESCUE	F-1
APPENDIX 1 - Fire and Rescue Diagram.....	F-5
APPENDIX 2 - Fire Department/District Resource Lists	F-6
ANNEX G - RESOURCE AND SUPPLY	G-1
APPENDIX 1 - Resource and Supply Diagram.....	G-5
APPENDIX 2 - Resource Lists.....	G-6
APPENDIX 3 - Resource & Supply Procurement Procedures For Emergency Situations, Phelps County.....	G-8
ANNEX H - HAZARDOUS MATERIALS RESPONSE	H-1
APPENDIX 1 - Support Agencies for Hazardous Materials Incidents.....	H-11
ANNEX I - PUBLIC WORKS.....	I-1
APPENDIX 1 - Public Works Diagram.....	I-6
APPENDIX 2 - Phelps County and Municipal Public Works Resources	I-7
APPENDIX 3 - SOG for Emergency Repairs.....	I-10

ANNEX J - EVACUATION	J-1
APPENDIX 1 - Evacuation Diagram	J-6
APPENDIX 2 - Facilities Requiring Special Consideration If Evacuated	J-7
APPENDIX 3 - Staging Areas for Evacuation	J-10
APPENDIX 4 - Evacuation Routes in Phelps County.....	J-11
APPENDIX 5 - Record of Evacuation (Form)	J-12
APPENDIX 6 - Hazardous Materials Evacuation.....	J-13
APPENDIX 7 - Flood Evacuation	J-15
APPENDIX 8 - Dam Failure.....	J-18
ANNEX K - IN-PLACE PROTECTIVE SHELTER	K-1
APPENDIX 1 - All Hazard In-Place Protective Shelter Planning.....	K-4
APPENDIX 2 - All Hazard In-Place Shelter Guidance	K-5
ANNEX L - RECEPTION AND CARE	L-1
APPENDIX 1 - Reception and Care Diagram	L-5
APPENDIX 2 - Reception and Care Resources.....	L-6
APPENDIX 3 - Reception and Care Facilities.....	L-7
APPENDIX 4 - Shelter Registration Form.....	L-8
ANNEX M - HEALTH AND MEDICAL	M-1
APPENDIX 1 - Health and Medical Diagram.....	M-7
APPENDIX 2 - Area Health and Medical Services.....	M-8
APPENDIX 3 - Phelps County Emergency Mortuary SOG.....	M-10
APPENDIX 4 - Medication Dispensing Sites	M-15
APPENDIX 5 - Ambulance Districts and Mutual Aid Agreements	M-16
ANNEX N – TERRORISM/WEAPONS OF MASS DESTRUCTION	N-1
APPENDIX 1 - Potential Targets for Terrorism.....	N-13
APPENDIX 2 - Terrorism Resources.....	N-14
APPENDIX 3 - Homeland Security Advisory System	N-16
Attachment A - Homeland Security/Forward Regional Response Teams.....	N-19
Attachment B - HSRT and FRRT Team Structure	N-20
Attachment C - Homeland Security Response Teams (map)	N-21
APPENDIX 4 - Public Information Procedures for Terrorist Incidents	N-22
Attachment A - Joint Information Center Functional Diagram for Terrorist Incident	N-26

**PHELPS COUNTY
EMERGENCY OPERATIONS PLAN**

BASIC PLAN

I. PURPOSE

This plan will establish policies and procedures that will allow the governments of Phelps County and the cities therein to save lives, minimize injuries, protect property, preserve functioning civil government, and maintain economic activities essential to their survival and recovery from natural and technological hazards. It establishes the guidelines for conducting efficient, effective, coordinated emergency operations involving the use of all resources belonging to Phelps County and the municipalities or available to them.

II. SITUATION AND ASSUMPTIONS

A. Situation

1. Phelps County is located in the southcentral region of the state. Counties that border Phelps are Maries and Gasconade to the north, Crawford and Dent to the east, Texas and Dent to the south and Pulaski to the west.
 - a. According to the 2000 U.S. census, Phelps County has a total population of 39,825. Incorporated subdivisions in Phelps County are Rolla (county seat, population 16,367), St. James (population 3,704), Newburg (population 484), Doolittle (population 644) and Edgar Springs (population 190).
 - b. Other unincorporated towns and villages include: Jerome, Flag Springs, Royal, Seaton, Duke, Flat, Beulah, Yancy Mills, Northweye, Dillon, Winkler, Vida and Elk Prairie.
 - c. The land area of Phelps County is 674 square miles and the Mark Twain National Forest covers a large part of the western side of the county. Interstate 44 crosses through the county. The local economy is primarily agricultural with several light manufacturing firms and a well established timber industry. The University of Missouri is located at Rolla.
2. Phelps County and its municipalities are vulnerable to many hazards, all of which have the potential to disrupt the communities, cause damage, and create casualties. It is improbable that these hazards would effect the entire county, however multiple political subdivisions could be involved, necessitating cooperation and coordination of actions from all the participating agencies and/or organizations. The identified natural and technological hazards include the following (see appendix 5 to the Basic Plan for further information):

floods	urban/structural fire
tornadoes	hazardous materials incident
wildfires	transportation accident
earthquake	power failure
drought	civil disorder
severe winter storms	terrorism
dam failure	nuclear power plant incident
heat wave	public health emergency

3. The Phelps County Emergency Operations Plan was developed for Phelps County and its municipalities. The exception here is the City of Rolla which has developed its own emergency operations plan.
4. The Meramec Regional Emergency Planning Committee (LEPC), in cooperation with Phelps County Officials, is responsible for the development and maintenance of a hazardous materials plan for Phelps County and its municipalities. A copy of this plan is kept on file with the Phelps County Emergency Management Director and the Phelps County Commission. This hazardous materials plan is referenced in Annex H.
5. Incidents involving acts of terrorism will be managed as established in Presidential Decision Directive 39 (PDD-39) which provides specific policy guidance regarding the response to acts of terrorism. The response to a terrorist incident involves two major components: a law enforcement response and an emergency management response. These components may progress concurrently or consecutively. See Appendix 4 to Annex E for further information on terrorism incidents.
6. Phelps County and the municipalities have considerable capabilities and resources, which, if effectively employed, would minimize or eliminate the loss of life and damage to property in the event of an emergency or major disaster. This must include the utilization of private and volunteer organizations to the greatest extent possible.
7. Mutual aid agreements, both written and verbal, exist between many of the emergency service agencies, the subdivisions in the county and surrounding areas.
8. This emergency management plan is being developed and maintained as required by local executive order, pursuant to Missouri State Law, Chapter 44, RSMo, and the all-hazard emergency planning guidance developed by the State Emergency Management Agency (SEMA).

B. Assumptions

1. Some of the situations as previously stated may occur after implementation

of warning and other preparedness measures, but others may occur with little or no warning.

2. Officials of Phelps County and the municipalities are aware of the possible occurrence of an emergency or major disaster and are also aware of their responsibilities in the execution of this plan and will fulfill these responsibilities as needed.
3. The proper implementation of this plan will reduce or prevent the loss of lives and damage to property in Phelps County and the municipalities.
4. Depending upon the severity and magnitude of the situation, local resources may not be adequate to deal with every occurrence. It may be necessary to request assistance through volunteer organizations, the private sector, mutual aid agreements, or state and federal sources.

III. CONCEPT OF OPERATIONS

A. General

1. It is the responsibility of local government to provide for a comprehensive emergency management program that meets the emergency needs of those who either have been or might be affected by an emergency or major disaster. When the emergency exceeds the local government's capability to respond, assistance will be requested from the state government. If additional assistance is needed beyond state capabilities, the state will coordinate requests to the proper federal agencies.
2. The chief elected official is ultimately responsible for emergency management activities within the boundaries of the jurisdiction. The Presiding Commissioner of Phelps County is responsible for those activities in the unincorporated areas of the county (see Title II, Division 10, Chapter 11, of the Missouri Code of Regulations). The chief elected official of each municipality (i.e., Mayor) has a similar responsibility within their corporate boundaries. These officials can delegate their authority, but never their responsibility.
3. At no time will the County Commission supersede the authority of the elected officials of any of the incorporated subdivisions unless: (1) requested to do so by those elected officials, (2) the local subdivisions' governmental body is incapacitated or cease to exist, or (3) empowered to do so by the governor under the authority of Chapter 44, RSMo.
4. This plan is based on the concept that the emergency functions assigned to the various groups, organizations, and individuals involved in this plan will parallel their normal day-to-day functions as closely as possible. The same

personnel and material resources will be employed as much as possible in both normal and emergency functions.

5. Those day-to-day functions that do not contribute directly to the emergency operations may be suspended for the duration of the emergency. The efforts that would normally be required for those functions will be redirected to the accomplishment of emergency tasks by the agency concerned.
6. This plan or portions thereof will be implemented according to the emergency classification and control procedures set forth in Appendix 3 to this Basic Plan. The procedures discussed under this Appendix will describe what happens when an emergency/disaster occurs, activation of the EOC, response procedures that will take place, and notification of departments/individuals.
7. By County Court Order dated July 11, 1974, Phelps County created an emergency management organization responsible for the preparation and implementation of emergency functions for Phelps County in accordance with Chapter 44, RSMo, and the State of Missouri Emergency Operations Plan. Four other communities in Phelps County have also established a legal basis for their emergency management organization:
 - a. Rolla City Ordinance, June 6, 1983
 - b. St. James City Ordinance, July 6, 1999
 - c. Newburg City Ordinance, March 14, 1977
 - d. Doolittle City Ordinance, February 6, 1973

B. Operational Time Frames

This plan is concerned with all types of hazards that may develop in Phelps County and its municipalities and must account for activities before, during, and after an occurrence. The following operational time frames were established for the various actions to be performed within the scope of this plan:

1. **Mitigation** -- A period of time during which activities are undertaken by individuals/departments to improve their capabilities to respond to a potential emergency and fulfill their assigned responsibilities.
2. **Preparedness** -- A period of time during which activities are undertaken by individuals/departments to increase their readiness posture during periods of heightened risk.
3. **Response** -- A period of time during which activities are undertaken by individuals/departments to respond to an occurrence that threatens or harms people/property.

4. **Recovery** -- A period of time during which activities are undertaken by individuals/departments to provide for the welfare of the people following a disaster and/or emergency.

IV. **ORGANIZATION AND ASSIGNMENT OF RESPONSIBILITIES**

A. Organization

1. The emergency management organization in Phelps County and the municipalities will be set up along the following functional lines:
 - a. Direction and Control Annex A
 - b. Communications and Warning Annex B
 - c. Emergency Public Information Annex C
 - d. Damage Assessment Annex D
 - e. Law Enforcement Annex E
 - f. Fire and Rescue Annex F
 - g. Resource and Supply Annex G
 - h. Hazardous Materials Response Annex H
 - i. Public Works Annex I
 - j. Evacuation Annex J
 - k. In-Place Shelter Annex K
 - l. Reception and Care Annex L
 - m. Health and Medical Annex M
 - n. Terrorism and WMD Annex N
2. Phelps County and the municipalities have developed procedures to perform the functions listed above using all available resources.
3. Diagrams of the emergency management structure by emergency function for Phelps County and the municipalities are located in Appendix 1 to this Basic Plan.

B. Assignment of Responsibilities

1. Specific groups, departments/agencies, and individuals will be assigned a primary responsibility to prepare for and to perform (coordinate) each of the functions listed previously. Others will be assigned a support responsibility. In some cases a function will be assigned to a county official or agency, while others to city agencies or a combination thereof. Assignments for Phelps County and the municipalities are identified on charts in Appendix 2 to this Basic Plan.
2. The specific tasks to be performed in each function are found in detail in each functional annex. Appendix 2 to this Basic Plan contains a basic list of task assignments by function common for both the county and city organizations.

3. It will be the responsibility of those agencies and individuals having a primary and/or support assignment to develop and maintain current standard operating guidelines (SOGs) and checklists which detail how their assigned tasks will be performed to implement this plan.
4. Departments and organizations tasked with emergency responsibilities will address the requirements of special needs groups (i.e., provide for medical needs, transportation, and other related emergency support for the handicapped, elderly, etc.).

V. DIRECTION AND CONTROL

- A. The Presiding Commissioner of Phelps County and the Mayor of each municipality (or their designated representative) are responsible for all emergency management activities to include implementing this plan and directing emergency response within their jurisdiction. These officials are also responsible for declaring a state of emergency and requesting state and federal assistance when appropriate (see Appendices 4 and 6 to this Basic Plan).
- B. The Emergency Management Director is responsible for the following:
 1. Brief appropriate officials and new employees on their roles in emergency management.
 2. Coordinate all emergency management activities.
 3. Make decisions on routine day-to-day matters pertaining to emergency management.
 4. Advise elected officials on courses of action available for major decisions.
 5. Insure proper functioning and staffing of the EOC and coordinate EOC operations during an emergency.
 6. Prepare emergency proclamation of a state of emergency when/if appropriate (see Appendix 6 to this Basic Plan).
 7. Act as liaison with other local, state, and federal emergency management agencies.
 8. Other duties as outlined the local ordinances, court orders, and agreements.
- C. Emergency Operations Center (EOC)
 1. Direction and control will originate from the jurisdiction's designated EOC

depending on the location and circumstances of the emergency. See Annex A for further information about the primary and alternate EOC.

2. The EOC will be staffed according to the level of emergency. See Appendix 3 to this Basic Plan.

VI. CONTINUITY OF GOVERNMENT

A. Lines of Succession

1. The line of succession for the Phelps County Commission is from the Presiding Commissioner through the District Commissioners, in order of their seniority. If these individuals are unavailable to perform their duties, the line of succession will continue to the County Clerk.
2. The line of succession for the Phelps County Emergency Management Director is through the Assistant Emergency Management Director then to the Presiding Commissioner.
3. The line of succession for the Mayor of each incorporated subdivision is to the Mayor Pro-Tem to be followed by members of the City Council as they decide.
4. The line of succession for each Municipal Emergency Management Director is through the Assistant Emergency Management Director then to the Mayor.
5. The individual or agency responsible for each annex (emergency function) identified in this plan must establish a line of succession and insure that departmental personnel and the Emergency Management Director are informed of this line of succession (refer to each annex of this plan).
6. In the event circumstances resulting from a disaster prevent a political entity from performing effective operations, the next higher political subdivision may assume authority until that political entity is able to adequately resume operations.

B. Preservation of Records

1. Vital records for Phelps County are in various forms such as written, microfilmed, or are on computerized disc. Currently, all hard copies of vital county records are stored in fire proof vaults and file cabinets at the Phelps County Courthouse in Rolla. Records are also kept on computer with a back-up disc. Some records have been transferred to microfilm and are stored in the courthouse.
2. All municipal records are stored at their respective City Halls. Departmental

records are kept on file with the respective departments.

3. In order to provide normal government operations after a disaster, all vital records of both a public and private nature recorded by such county and city officials as the clerk, collector, assessor, etc., must be protected and preserved. These would include legal documents, property deeds, tax records, etc. The following guidelines will apply:
 - a. Certain records and documents are vital to the continuance of government following a major disruption of normal activities such as a major disaster. These records and documents are to be identified by officials responsible for their day-to-day maintenance.
 - b. Resources from local government will be allocated to provide for one or more of the following options: duplication of all such records, timely movement to secure or safe areas outside the danger area, and/or development of secure and safe storage areas within the jurisdiction.
4. Each emergency support service (i.e., law enforcement, fire, public works, etc.) must establish procedures to protect records deemed essential for continuing government functions and the conduct of emergency operations.
5. Further information on preservation of records can be obtained by contacting the Secretary of State's Office.

VII. ADMINISTRATION AND LOGISTICS

- A. Whenever possible, procurement of necessary resources will be accomplished using normal, day-to-day channels.
- B. During unusual situations when such constraints would result in the loss of life and property, emergency requisition procedures may be used. This will be done under the authorities and by the procedures set forth in the local ordinances.
- C. Accurate records of all actions taken in an emergency are essential for the design of mitigation activities, training and settling possible litigation. Each department head, or that person responsible for an emergency function, must keep detailed, accurate records of all actions taken during an emergency.
- D. Agreements and understandings with other local jurisdictions, higher levels of government, and other agencies can be utilized to supplement local resources should an emergency situation exhaust the capabilities of Phelps County and the municipalities. Requests for such assistance will be made in accordance with negotiated mutual aid agreements and understandings. All such agreements should be formalized in writing whenever possible.

- E. Disaster assistance from the state or federal government will be utilized in accordance with their provisions and statutes. Requests for such assistance will be made in accordance with the procedures as set forth in Appendix 4 to this Basic Plan.
- F. Resource and supply matters have been addressed in Annex G. The Resource and Supply Coordinator has identified those resources available in Phelps County and the municipalities. This list will be expanded to include critical resources and those available from neighboring jurisdictions, military installations, and the state and federal government. A general resource list for Phelps County is found in Appendix 1 to Annex G.
- G. Procedures for the inventory, storage, and maintenance of resources, including donations and services of the private sector, will be as specified in the appropriate annexes or standard operating guidelines.
- H. Discrimination on the grounds of race, color, religion, nationality, sex, age, physical impairment, or economic status will not be allowed in the execution of emergency management functions. This policy applies to all levels of government and the private sector.

VIII. PLAN DEVELOPMENT AND MAINTENANCE

- A. Review and written concurrence of this plan and its annexes will be accomplished as follows: Each agency/department of government and private sector organizations assigned emergency responsibilities will review this plan. They will report their concurrence to their chief elected officials through the Phelps County Emergency Management Director. The County Commissioners, Mayors and Emergency Management Director(s) will sign the promulgation document for all departments and organizations.
- B. The Phelps County Emergency Management Director will initiate an annual review of the plan by all officials and agencies. The Director will ensure that necessary changes and revisions to the plan are prepared, coordinated, published, and distributed. The Director will provide a copy of the plan revisions to all organizations/agencies assigned responsibility for implementation of the plan.
- C. This plan will be activated once a year in the form of a simulated emergency, taking into account actual events in order to determine if revisions can be made that would improve disaster response and recovery operations. This will also provide practical controlled operations experience to those who have EOC responsibilities. This will be done by the Emergency Management Director with the approval of the chief elected officials.

IX. AUTHORITIES AND REFERENCES

- A. Federal Public Law 93-288, Robert T. Stafford Disaster Relief and Emergency Assistance Act, as amended
- B. Federal Public Law 99-499, SARA, Title III
- C. Presidential Decision Directive 39 (PDD 39), U.S. Policy on Counterterrorism
- D. Guide for All-Hazard Emergency Operations Planning, SLG 101, FEMA, September 1996
- E. Revised Statutes of Missouri, Chapter 44, as amended
- F. Revised Statutes of Missouri, 49.070
- G. Missouri Code of State Regulations, Chapter 292, Spill Bill
- H. Missouri Code of State Regulation, Title XI, Division 10, Chapter 11
- I. State of Missouri Emergency Operations Plan, as amended
- J. Missouri All-Hazard Emergency Planning Guidance, SEMA, as amended
- K. Missouri Hazard Analysis, SEMA, as amended
- L. Phelps County Court Order establishing Emergency Management, July 11, 1974
- M. Rolla City Ordinance establishing Emergency Management, June 6, 1983
- N. St. James City Ordinance establishing Emergency Management, July 6, 1999
- O. Newburg City Ordinance establishing Emergency Management, March 14, 1977
- P. Doolittle City Ordinance establishing Emergency Management, February 6, 1973
- Q. Callaway Nuclear Power Plant Plan, as amended.

APPENDICES

- 1. Phelps County Emergency Management Organization by Emergency Function
Attachment A - Municipal Emergency Management Organization by Emergency Function
- 2. Assignment of Responsibilities

Attachment A - Phelps County Functions & Responsibility Chart
Attachment B - Municipal Functions & Responsibility Chart
Attachment C - Task Assignments by Function

3. Emergency (Disaster) Classification and Control Procedures
4. Procedures for Requesting State and Federal Assistance
Attachment A - Contact Numbers
5. Phelps County Hazard Analysis

Attachment A -Earthquake Response

Addendum 1 - Projected Earthquake Intensities (map)

Attachment B - Phelps County Dam Inventory

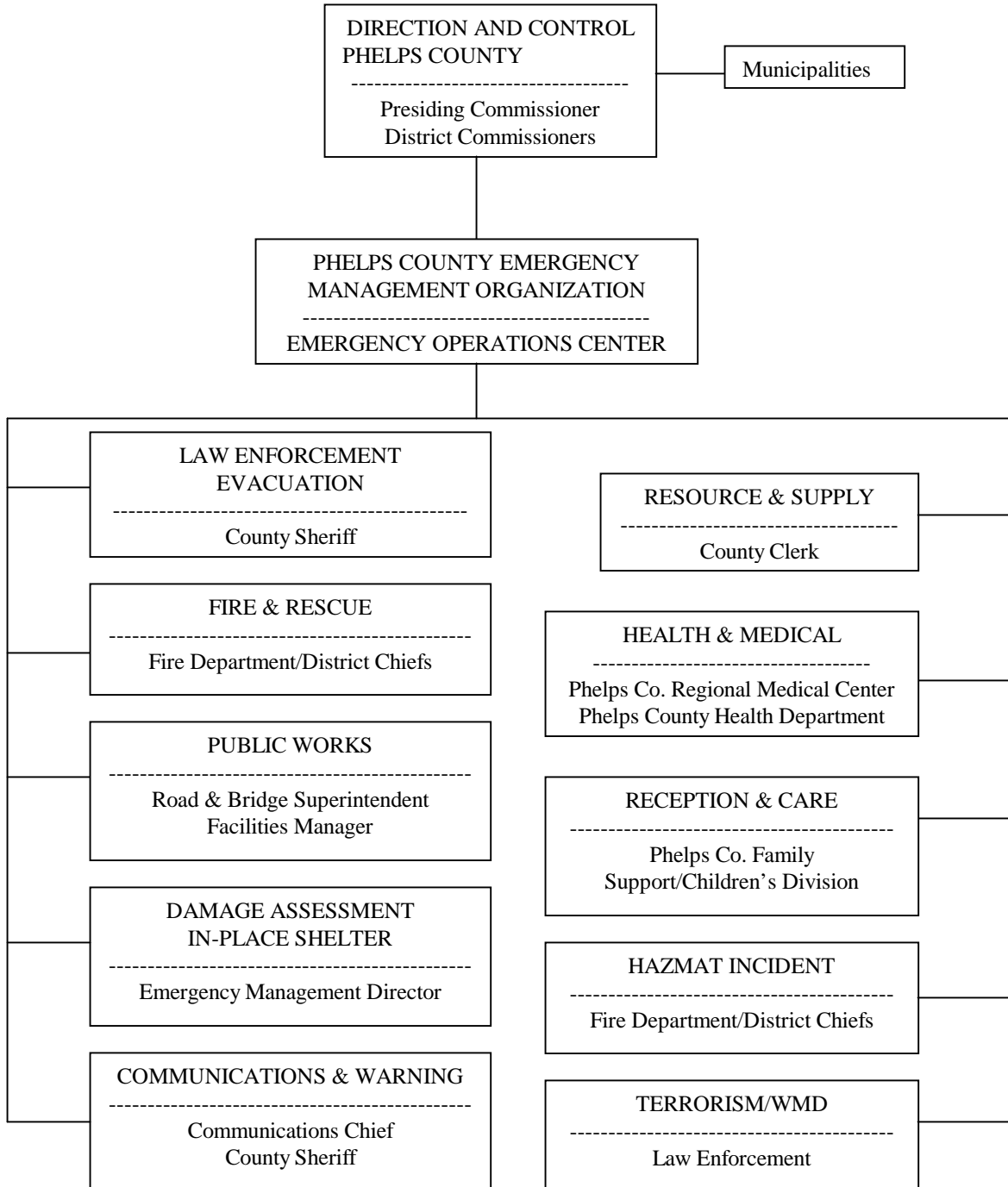
Attachment C - National Flood Insurance Program Information

Attachment D - Callaway Nuclear Plant Emergency Planning Zones (Map)

6. Emergency Government Proclamation of a State of Emergency in Phelps County

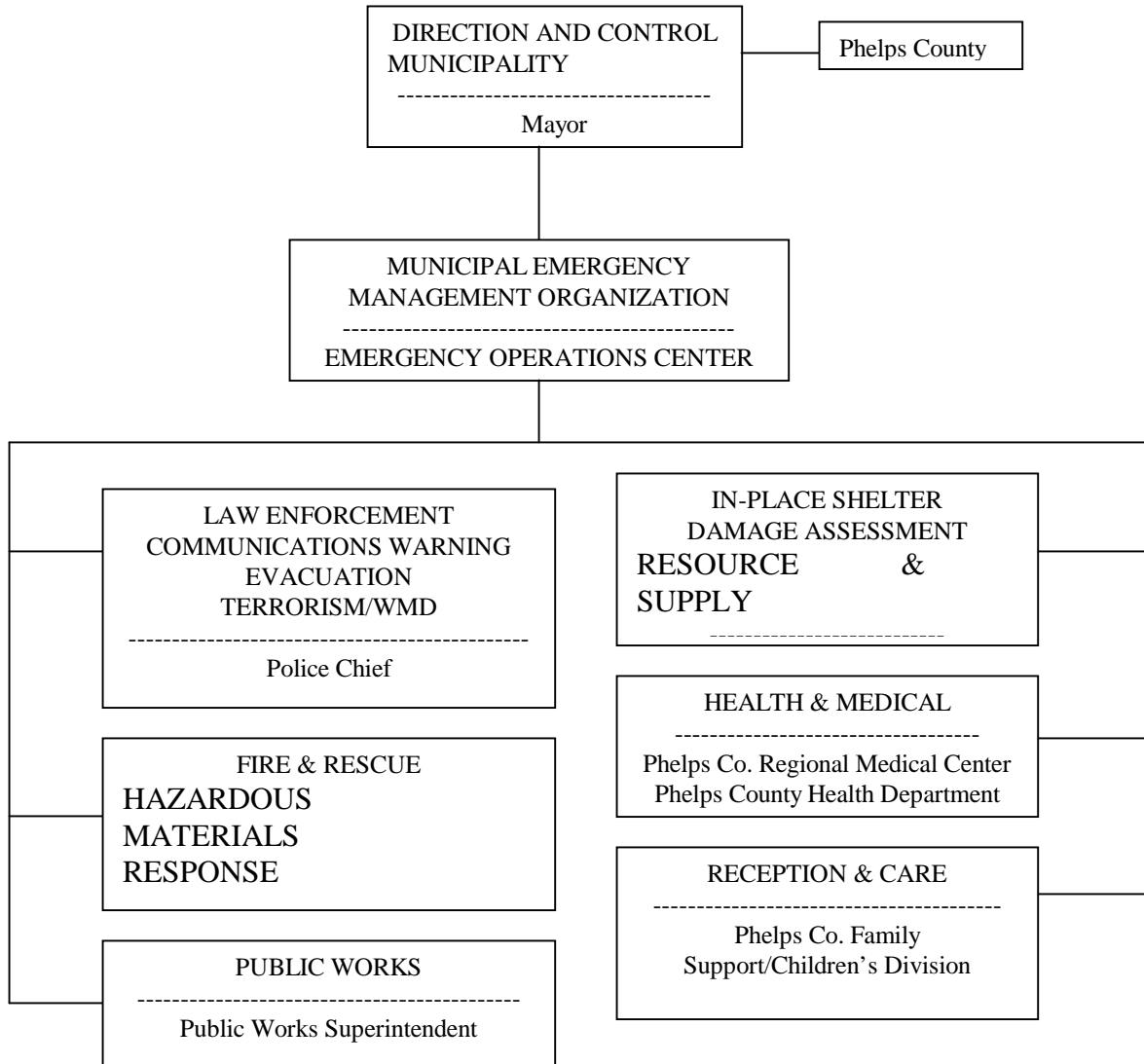
Appendix 1 to the Basic Plan

**PHELPS COUNTY EMERGENCY MANAGEMENT ORGANIZATION
BY EMERGENCY FUNCTION**



Attachment A
Appendix 1 to the Basic Plan

**MUNICIPAL EMERGENCY MANAGEMENT ORGANIZATION
BY EMERGENCY FUNCTION**



Appendix 2 to the Basic Plan

ASSIGNMENT OF RESPONSIBILITIES

- A. Functions and Responsibility Charts (Attachments A and B)
 - 1. These charts assign specific agencies and/or individuals the responsibility to prepare for and to perform each of the thirteen identified emergency management functions (see Part IV of this Basic Plan), and also whether it is a primary or supporting role.
 - 2. There are two such charts, one for Phelps County and one for the municipalities. These charts are general in nature and should not be considered all inclusive.

- B. Task Assignments by Function (Attachment C)
 - 1. Following the P & S Charts there is a basic list of tasks to be assigned to each function. These are only general lists that will be expanded in the various annexes.
 - 2. There is one list of tasks for each function whether it is for the county or the municipality. Some tasks may be common to more than one function.

Attachment A
Appendix 2 to the Basic Plan

**FUNCTIONS & RESPONSIBILITY CHART
PHELPS COUNTY**

FUNCTIONAL ANNEX	A	B	C	D	E	F	G	H	I	J	K	L	M	N	
P = Primary Responsibility P*= Shared Primary Responsibility S = Support Responsibility Department/Individual	F U N C T I O N	D I R E C T I O N & C O N T R O L	C O M M U N I C A T I O N & W A R N I N G	E M E R G E N C Y P U B L I C I N F O R M A T I O N	D A M A G E A S S E S S M E N T	L A W E N F O R C E M E N T	F I R E & R E S C U E	R E S O U R C E & S U P P L Y	H A Z A R D	P U B L I C W O R K S	E V A C U A T I O N	I N - P L A C E S H E L T E R	R E C E P T I O N & C A R E	H E A L T H & M E D I C A L	T E R R O R I S M & W M D S
County Commission	P	S	P	P*	S	S	S	S	S	S	S	S	S	S	
Emergency Management Director	S	S	S	P*	S	S	S	S	S	S	P	S	S	S	
County Sheriff	S	P*	S		P	S		S		P	S	S	S	P	
County Clerk	S		S	S			P		S			S			
Road & Bridge Superintendent	S		S	S				S	P*		S				
County Coroner	S		S										S		
County Health Department	S		S				S	S			S	S	P*	S	
County Family Support/Children's Division	S		S				S	S			S	P	S		
Fire Departments/Districts	S	S	S	S	S	P		P		S	S		S	S	
Ambulance District	S	S	S		S	S		S		S	S	S	S	S	

County Highway Department	S	S	S	S		S		S	S		S			
Phelps County Regional Medical Center	S		S				S	S			S	S	P *	
Phelps County Red Cross Chapter	S		S	S			S			S	S	S	S	S
Meramec Regional LEPC	S					S		S						
Central Dispatch Communications Chief	S	P *			S	S		S	S					
Facilities Manager									P *					

Attachment B
Appendix 2 to the Basic Plan

MUNICIPAL FUNCTIONS & RESPONSIBILITY CHART

FUNCTIONAL ANNEX	A	B	C	D	E	F	G	H	I	J	K	L	M	N	
P = Primary Responsibility P*=Shared Primary Responsibility S = Support Responsibility Department/Individual	F U N C T I O N	D I R E C T I O N & C O N T R O L	C O M M U N I C A T I O N & W A R N I N G	E M E R G E N C Y P U B L I C I N F O R M A T I O N	D A M A G E A S S E S S M E N T	L A W E N F O R C E M E N T	F I R E & R E S C U E	R E S O U R C E & S U P P L Y	H A Z A R D W O R K S	P U B L I C W O R K S	E V A C U A T I O N	I N - P L A C E S H E L T E R	R E C E P T I O N & C A R E	H E A L T H & M E D I C A L	T E R R O R I S M & W M D S
Mayor	P	S	P	S	S	S	S	S	S	S	S	S	S	S	
Emergency Management Director	S	S	S	P	S	S	P	S	S	S	P	S	S	S	
Police Chief	S	P	S		P	S		S		P	S	S	S	P	
Fire Chief	S	S	S	S	S	P	S	P		S	S	S	S	S	
Public Works Superintendent	S	S	S	S			S		P		S	S			
City Utilities	S	S	S						S						
Ambulance District	S	S	S		S		S			S	S	S	S	S	
Phelps County Regional Medical Center	S	S	S							S	S	S	P*	S	
County Coroner	S		S										S		
County Family Support/Children's Division	S		S				S				S	P	S		
County Health Department	S		S				S	S			S	S	P*	S	
Phelps County Red Cross Chapter	S		S	S			S			S	S	S	S		

Meramec Regional LEPC	S					S		S							S
Communications Chief	S	S			S	S		S	S						S

These assignments will vary depending upon the municipality. Specific assignments are identified in each Annex of this plan.

Attachment C
Appendix 2 to the Basic Plan
TASKS ASSIGNMENTS BY FUNCTION

The following is a basic list of tasks assigned to each function. These task assignments are common to both county and city organizations. Specific tasks are listed in the appropriate Annex

A. Direction and Control (Annex A)

Phelps County -- Presiding Commissioner

Municipalities -- Mayor

1. Make policy decisions relating to emergency management.
2. Plan for emergency management activities.
3. Oversee hazard mitigation activities.
4. Control operations during disasters.
5. Coordinate and direct relief and recovery operations.
6. Coordinate emergency management activities.
7. Maintain an exercise program.
8. Supervise the emergency public information function.

B. Communications and Warning (Annex B)

Phelps County – Communications Chief/County Sheriff

Municipalities - Police Chief

1. Monitor all emergency situations to insure proper response.
2. Train personnel (full-time and supplementary).
3. Support all other emergency functions when needed.
4. Develop warning plans and procedures for all identified hazards (see Basic Plan, Situation and Assumptions).
5. Maintain and expand warning and alert devices (sirens, tone-activated receivers, etc.).

C. Emergency Public Information (Annex C)

Phelps County - Presiding Commissioner

Municipalities - Mayor

1. Appoint an information officer who will be the point of contact for the media during disaster situations.
2. Coordinate with the various departments concerning the release of public information.
3. Develop procedures for rumor control and information authentication
4. Clear information with the chief elected officials before release to the public.
5. Use all news media for the release of information.
6. Maintain and release as appropriate EPIs for all identified hazards.
7. Conduct annual programs to acquaint news media with emergency plans.

D. Damage Assessment (Annex D)

Phelps County – County Commissioners/Emergency Management Director
Municipalities - Emergency Management Director

1. Maintain plans and procedures consistent with those of the state and federal government.
2. Recruit and train personnel.
3. Provide disaster information to Direction and Control.
4. Assist federal and state officials in damage estimation.
5. Assist in mitigation activities by identifying potential problem areas.

E. Law Enforcement (Annex E)

Phelps County - County Sheriff
Municipalities - Police Chief

1. Maintain law and order during emergency operations.
2. Provide necessary support during emergency operations (i.e., site security, access control, traffic control, EOC security, etc.)
3. Provide and/or support communications and warning.
4. Lend support to fire, medical, hazardous materials and other emergency services as dictated by the situation.
5. Coordinate with other law enforcement groups.
6. Implement and/or continue training courses for auxiliaries and reserves.
7. Provide personnel with the appropriate level of hazardous materials training (coordinate with LEPC).

F. Fire and Rescue (Annex F)

Phelps County and Municipalities - Fire Department/District Chiefs

1. Control fires during emergency operations.
2. Conduct fire prevention inspections.
3. Assist with search and rescue operations.
4. Support health and medical, communications and warning.
5. Respond to hazardous materials incidents.
6. Provide radiological support, including decontamination.
7. Maintain/develop plans and procedures as required or conditions change.
8. Conduct training courses in self-help fire prevention techniques, as well as, fire prevention inspections.
9. Provide personnel with the appropriate level of hazardous materials training (coordinate with LEPC).

G. Resource and Supply (Annex G)

Phelps County - County Clerk
Municipalities - City Clerk

1. Maintain and update resource lists of supplies and personnel for use in disaster situations.
2. Identify potential resource requirements.
3. Coordinate with other agencies and departments to fill resource shortages.
4. Establish plans and procedures on how to channel donations and offers of volunteer assistance following a large scale disaster situation.

H. Hazardous Materials Response (Annex H)
Phelps County and Municipalities – Fire Departments

1. Develop/maintain hazard analysis.
2. Provide initial hazard assessment to response personnel and the general public.
3. Lead the initial environmental assessment.
4. Prescribe personnel protective measures.
5. Issue public warning.
6. Establish an on-scene command post.
7. Determine when reentry is possible.
8. Provide response personnel (i.e., law enforcement, fire, public works, health and medical) with the appropriate level of hazardous materials training.
9. Work with nearby hospitals to insure procedures are available to handle contaminated patients and to decontaminate and isolate such patients.
10. Maintain a peace-time radiological accident capability.
11. Maintain the inventory of radiological equipment from the state.

I. Public Works (Annex I)
Phelps County - Road & Bridge Superintendent/Facilities Manager
Municipalities - Public Works Superintendent

1. Remove debris and dispose of garbage.
2. Make emergency road and bridge repairs.
3. Restore utility service, especially to critical facilities.
4. Assist with flood control and emergency snow removal.
5. Gather damage assessment information.
6. Provide necessary support to other departments (i.e., heavy equipment, barricades, etc.).
7. Provide personnel with the appropriate level of hazardous materials training (coordinate with LEPC).

J. Evacuation (Annex J)
Phelps County and Municipalities - Law Enforcement

1. Verify evacuation routes and implement evacuations plans.
2. Identify affected facilities or individuals with special needs (nursing homes, invalids).

3. Make arrangements to keep essential facilities operating.
4. Maintain a continuous and orderly flow of traffic.
5. Furnish to the Public Information Officer instructions regarding evacuation procedures (i.e., rest areas, fuel stops, etc.) for release to the public.

K. In-Place Shelter (Annex K)

Phelps County and Municipalities - Emergency Management Director

1. Advise the public on what protective actions to take.
2. Identify warning procedures.
3. Maintain emergency public information materials.
4. Identify/Provide sheltering for the population in situations for which such action is appropriate. Coordinate with Reception and Care, Annex L.
5. Assist with the movement of people to shelters if necessary.

L. Reception and Care (Annex L)

Phelps County and Municipalities – Phelps Co. Family Support/Children’s Division

1. Review list of designated temporary lodging and feeding facilities.
2. Review procedures for the management of reception and care activities (feeding, registration, lodging, etc.).
3. Designate facilities for special needs groups.
4. Maintain supply of registration forms.
5. Coordinate mass feeding operations with Resource and Supply.
6. Identify facilities for pet/animal control.

M. Health and Medical (Annex M)

Phelps County and Municipalities - Phelps County Regional Medical Center Administrator/
Phelps County Health Department Administrator

1. Provide for public health services during an emergency.
2. Coordinate plans with representatives of private health sector to include nearby hospitals, nursing homes, etc.
3. Implement plans for mass inoculation.
4. Review provisions for expanded mortuary services.
5. Develop procedures to augment regular medical staff.
6. Develop plans to provide medical care in shelters.
7. Provide personnel with the appropriate level of hazardous materials training (coordinate with LEPC).

N. Terrorism and Weapons of Mass Destruction (Annex N)

Phelps County and Municipalities - Law Enforcement

1. Coordinate and determine readiness actions and establish mutual aid agreements with local law enforcement and supporting agencies during periods of increased threat.
2. Identify potential terrorist targets and ensure their security.

3. Provide personnel with the appropriate levels of training.
4. Provide an initial incident assessment.
5. Investigate incident, maintain site as a crime scene, identify and apprehend suspects.
6. Conduct reconnaissance in vicinity of the incident site to identify threats from delayed action and secondary weapons.
7. Ensure the safety of the public during evacuation and sheltering.

EMERGENCY (DISASTER) CLASSIFICATION & CONTROL PROCEDURES

I. PURPOSE

To establish emergency/disaster classification and control procedures for county and/or city officials and emergency response personnel during periods of emergency/disaster.

II. EMERGENCY CLASSIFICATION

- A. Level I Emergency is an occurrence that can be handled routinely by one or more departments within the county and/or city. It has the potential to require resources in excess of those available to the responding agency(ies) through mutual aid agreements, etc., to bring the situation under control (Example: bomb threat, traffic accident with fuel spill, etc.).
- B. Level II Emergency is an occurrence that requires a major response and the significant commitment of resources from several governmental agencies, but will still be within the capabilities of local resources to control. (Example: localized flooding, isolated tornado damage, structure fire with hazardous materials involved, etc.)
- C. Level III Emergency is an occurrence that requires an extensive response and commitment of resources from all departments/agencies and could necessitate requesting outside assistance from state and federal agencies. (Example: earthquake, major tornado damage over large areas with extensive casualties, extensive flooding or any incident requiring an evacuation of a significant sized area.)

III. RESPONSE PROCEDURES

- A. The dispatcher, upon notification of an emergency, will notify the appropriate officer(s) on duty to respond. (The term dispatcher when used in these procedures refers to the Central 911 Dispatch Center.)
- B. On-scene command and control of the affected area will be established by the first ranking officer of the responding agency at the scene of the incident. For incidents involving hazardous materials, the Incident Management Command System (IMS/ICS) will be implemented and the Incident Commander will be responsible for directing response operations.
- C. The on-scene commanding officer will maintain radio contact with the dispatcher to advise of the situation and to alert additional response agencies as necessary.
- D. When it becomes apparent to the commanding officer at the scene that control of the

incident is beyond the response capabilities of the initial responding agency(ies) and the emergency has escalated from Level I to Level II or higher, the officer will instruct the dispatcher to notify the next in command (i.e., Sheriff, Police Chief, Fire Chief, Emergency Management Director, etc.) of the seriousness of the disaster.

- E. The next in command will in turn, advise the chief elected official (i.e., Presiding Commissioner for Phelps County, or Mayor of the involved municipality) of the situation, at which time a determination will be made as to whether or not the EOC should be activated and personnel should be assembled.
- F. Should it be decided to assemble the EOC staff, each requested member of the EOC staff will be contacted by the dispatcher and advised to report to the EOC. The dispatcher will be assisted by the on-duty personnel at the department and/or the Emergency Management Director to make the notifications if necessary (See Appendix 2 to Annex A for EOC Staffing Roster/Call-Up List).
- G. After the EOC (Direction and Control) staff has assembled, it will be determined what personnel will be required to control operations. This determination will be made by the officials present.

IV. NOTIFICATION PROCEDURES

- A. It will be the responsibility of the dispatcher on duty to notify key government officials and emergency response organizations/departments. The primary methods of communications will be through radio, telephone and/or pagers.
- B. The dispatcher will have available at the communications center the necessary call-up/notification lists which include names and telephone numbers of individuals and organizations to contact. It is the responsibility of the dispatcher along with each organization/department to see that these lists are kept current.
- C. In some cases it will be the responsibility of the first organization member contacted to notify and/or recall the necessary personnel within that organization to respond to the incident. Therefore, each organization must maintain current internal personnel notification/recall rosters and a means to implement them.
- D. Depending upon the type of emergency, the dispatcher will notify/warn special locations such as schools, hospitals, nursing homes, and places of public assembly by using all methods as outlined in the Communications and Warning Annex (i.e., outdoor sirens, cable television interrupt, news media alert). A list of names and telephone numbers to contact is available with the dispatcher. On-duty personnel at the department and/or the Emergency Management Director will assist with this notification.
- E. It is the responsibility of the dispatcher to keep a log of all messages received and sent

(See Annex A for copies of message and log forms).

- F. Operational procedures/checklists will be established and utilized in so far as possible.
- G. Situations requiring notification that are not covered by these checklists will be handled on a case by case basis by the Emergency Management Director and his/her staff.

Appendix 4 to the Basic Plan

**PROCEDURES FOR REQUESTING
STATE AND FEDERAL ASSISTANCE**

I. STATE AND FEDERAL ASSISTANCE

- A. Assistance from State and/or Federal agencies such as the Department of Conservation, Department of Natural Resources, U.S. Army Corps of Engineers, etc. can be requested directly by calling the appropriate agency (see each Annex of this plan for specific agencies and their contact points). State and/or Federal assistance may also be requested through the State Emergency Management Agency (SEMA).
- B. SEMA Notification
1. SEMA has a 24-hour telephone number to request assistance in a disaster or emergency: 573-751-2748.
 - a. Business hours: Your call will be answered by personnel on duty in the EOC.
 - b. Non-business hours: Leave your name and a call back number. Your call will be returned by the Duty Officer.
 2. If the telephone lines are down, the Duty Officer can still be contacted. The Missouri State Highway Patrol can relay the information to Troop F in Jefferson City by radio. During working hours, the Missouri Uniform Law Enforcement System (MULES) can also be used to transmit messages to the MULES terminal in the State Emergency Operations Center.

II. NATIONAL GUARD ASSISTANCE

- A. General Facts
1. Requests for such assistance can only be made by the chief elected official or designated successor as outlined in this plan (see Part VI of the Basic Plan, Continuity of Government).
 2. Requests should only be made after local resources are exhausted.
 3. The State Emergency Management Agency (SEMA) should be informed prior to making such a request.

B. Procedures

1. Analyze the situation to determine:
 - a. If threat to life or property still exists.
 - b. To insure all local resources are committed.
2. Make the request directly to the Governor through SEMA by the quickest means possible. If the telephone or radio is used, a hard copy should follow.

Attachment A to Appendix 4
To the Basic Plan

CONTACT NUMBERS

U.S. ARMY CORPS OF ENGINEERS

John (Jake) Scanlon
Chief, Emergency Management, St. Louis District
Office: (314) 331-8569
Home: (314) 441-8926
FAX: (314) 331-8615
24/7: (314) 331-8567

NATIONAL WEATHER SERVICE

St. Louis Weather (636) 447-1876
River Stages 1-800-852-7497 (Identify yourself as Phelps County Emergency
Mgmt.)

NATIONAL RESPONSE CENTER

For hazardous chemical and oil spills

1-800-424-8802

U.S. ENVIRONMENTAL PROTECTION AGENCY REGION VII

(913) 281-0991

CHEMTREC

1-800-424-9300

MISSOURI DEPARTMENT OF NATURAL RESOURCES

Environmental Response Office (24 hour)

(573) 634-2436

MISSOURI DEPARTMENT OF TRANSPORTATION, DISTRICT 5

Roger Swartze, District Engineer (573) 751-3322
1511 Missouri Blvd., Box 718 FAX (573) 522-1059
Jefferson City, Missouri 65102

OTHER ASSISTANCE

AMERICAN RED CROSS

Phelps/Pulaski Chapter
200 N. Main
Rolla, MO 65401
573-364-3947
FAX 573-364-6351

SALVATION ARMY

Vince Wright, Emergency Services Coordinator
Office (314) 771-7366 (Nationwide)
Pager (314) 905-1743
Pager 1-888-581-5053
FAX (314) 533-1080

Dee Stenger, Emergency Services Coordinator
Office (816) 471-4337
Pager (816) 840-7701
FAX (816) 471-5491
Skypage 1-800-306-5125

PHELPS COUNTY HAZARD ANALYSIS

This appendix is designed to provide an overview of the hazards that could affect Phelps County. In general, hazards can be placed into two (2) categories: Natural and Technological.

I. NATURAL HAZARDS

A. Tornado

Since Missouri lies in the heart of the nation's "tornado alley," its residents are particularly vulnerable to tornadoes. Seventy percent (70%) of Missouri's tornadoes occur during the months of March, April, May and June, but a tornado can occur at any time of the year. The majority of tornadoes, along with their parent thunderstorms, move from the southwest to the northeast; however, they have been observed moving in from all directions. In past years from 1950 to 2003 Phelps County has recorded 12 tornado touchdowns. There were no deaths recorded.

B. Winter Storms

Although excessive snowfalls with prolonged severe cold or storms producing blizzard conditions are rare in Missouri, they do occur. Most snow usually falls during the months of December, January, and February. Weather data indicates that counties south of the Missouri River may receive an annual average of 8 to 12 inches of snow a year. A large winter storm accompanied by severe cold could cause numerous secondary hazards such as: power failure, transportation incidents, and fuel shortages.

C. Floods

Flooding is a potential risk in Phelps County. Phelps County lies in the Missouri River Watershed and is extremely vulnerable to flooding. There are several major waterways in Phelps County, including the Gasconade, Little Piney and Bourbeuse Rivers and various other creeks and branches. Flooding could potentially occur anywhere in the county. Phelps County was included in Presidential Declarations for disaster assistance for flooding in Summer 1993 and Spring 1994. Both disaster declarations were for assistance to individuals. A summary of the jurisdictions that participate in the National Flood Insurance Program is provided in Attachment C to this Appendix.

D. Earthquake

Although earthquakes in the Midwest occur less frequently than on the west coast, the threat of earthquake to Missouri residents is high. In the event of a magnitude 7.6 earthquake along the New Madrid seismic zone, Phelps County could experience an intensity of VI on the Modified Mercalli Scale. See Attachment A to this Appendix for additional information.

E. Drought

Drought is defined as a prolonged period with no rain that can affect agricultural areas and impact water supply systems. Because of its geographical location and characteristic weather patterns, Missouri is vulnerable to drought conditions. Agricultural droughts are the most common of record, particularly those inflicting damage to corn crop yields.

The Department of Natural Resources has divided the state into three regions which are prioritized according to drought susceptibility: Region A - slight, Region B - moderate, Region C - high. All of Phelps County is located in Region B. Region B has moderate drought susceptibility. In this region the groundwater resources are adequate to meet domestic and municipal water needs, but due to required well depths, irrigation wells are very expensive. The topography generally is unsuitable for row-crop irrigation.

F. Heat Wave

A heat wave is defined by the National Weather Service as three consecutive days of 90 degree Fahrenheit plus temperatures. These high temperatures generally occur from June through September, but are most prevalent in the months of July and August. When heat indexes of 105 degrees are reached for a large portion of the state, the Missouri Department of Health will announce a hot weather health advisory, warning or emergency depending upon the duration. Heat waves are often a major contributing factor to power outages (brownouts, etc.) as the high temperatures result in a tremendous demand for electricity for cooling purposes.

G. Wildfire

A wildfire is the uncontrolled burning in grasslands, brush, or forest/woodlands. The majority of fires and the greatest acreage loss will occur during the spring fire season, which is normally between February and May.

II. TECHNOLOGICAL HAZARDS

A. Hazardous Materials Incident

Phelps County is prone to hazardous materials incidents from both fixed containment sites and transportation accidents. There are numerous fixed facilities that store/use hazardous materials. Several major transportation routes cross through the county which include the following (additional information is located in Annexes H and J):

1. highways: I-44, U.S. 63, MO 68, MO 72
2. rail lines: Burlington Northern Santa Fe
3. gas pipelines: Missouri Gas Company, Missouri Public Service

B. Transportation Accident

Mass transportation is defined as the means, or system, that transfers larger groups of individuals from one place to another. The important key is that we are discussing transportation accidents involving the public, not materials (see hazardous materials incidents). Thus, mass transportation accidents include public airlines, railroad passenger cars, metro rail travel, tour buses, city bus lines, school buses, passenger vessels, and other means of public transportation.

There are no passenger rail lines in Phelps County and the nearest major airports that provide passenger service are located in St. Louis, Springfield and Columbia. The Rolla (Vichy) National Airport located in Maries County near Vichy on U.S. Hwy. 63, provides only "limited" passenger service. There is also the possibility of an incident involving a tour bus (I-44, U.S. 63) as well as a school bus accident.

C. Dam Failure

There are twenty-nine (29) dams located in Phelps County. Of these dams there are 4 high hazard dams, 8 significant hazard, and 16 are low hazard. The hazard rating is based on the contents of the downstream environment zone (permanent dwellings, public buildings, campgrounds with permanent water/sewer/electrical services, industrial buildings, etc.). The partial or complete collapse of any of these dams has the potential to cause downstream flooding problems in the county. See Attachment B to this Appendix for a list of dams in Phelps County.

D. Urban and Structural Fire

Fire is the primary cause of accidental death in the United States, surpassing floods, automobile accidents and other disasters (20 times more deaths are caused by fire than by floods, hurricanes, tornadoes and earthquakes combined.) Fires are by far the most frequent hazard that will affect Phelps County. Fires may be accidental (lightning) or intentional (arson) and have the potential to cause major conflagrations, leading to secondary hazards, such as a hazardous materials incidents.

E. Power Failure

This type of incident involves any interruption or loss of electrical service due to disruption of power generation or transmission caused by accident, natural hazards, equipment failure, or fuel shortage. A significant power failure would require the involvement of the emergency management organization to coordinate provision of sheltering, heating/cooling, etc.

F. Civil Disorder

Any incident intended to disrupt community affairs and requiring police intervention to maintain public safety. Civil disorders include the following types: riots, strikes resulting in violence, and demonstrations resulting in police intervention and arrests.

Although, the target areas of strikes are generally more easily defined, areas subject to riots or demonstration may encompass large portions of the community. The types of facilities that could be targets of such activities include government buildings, military bases, schools/universities, and correctional facilities. There is one university and numerous city, county, state, and federal office buildings located in the City of Rolla. Fort Leonard Wood is located in Pulaski County which adjoins Phelps County.

G. Terrorism

Terrorism as defined by the FBI includes: “the unlawful use of force or violence, committed by a group(s) of two or more individuals, against persons or property to intimidate or coerce a government, the civilian population, or any segment thereof, in furtherance of political or social objectives.” According to the FBI there are two types of terrorism: Domestic Terrorism and International Terrorism.

Terrorism can take place in various forms, depending on the technological means available to the terrorist group, the nature of the political issue motivating the attack, and the points of weakness of their target. Potential terrorist actions include: bombings, airline attacks, nuclear/biological/chemical attacks, infrastructure attack, arson, and kidnappings/assassinations.

Although this state has identified several different extremist groups operating here, there have been no indications of any specific terrorist activities. The potential does remain for some new extremist and/or terrorist group to move into the state. An open society such as ours, which is dependent upon technology for its continued smooth operation, remains a potential target for terrorists. Additional information on terrorism is found in Annex E, Appendix 4.

H. Nuclear Power Plant Incident

The Callaway Nuclear Plant is a commercial nuclear power reactor located north of Phelps County in Callaway County. The plant is owned and operated by AmerenUE, St. Louis. The Callaway Plant has declared eight Unusual Events since it came on line

in 1984. To date the last declared event was on May 18, 1989.

In a worst case scenario where a significant release of radioactive material has occurred, food sources out to a 50-mile radius of the plant could be contaminated.

The northern part of Phelps County is within the 50-mile Emergency Planning Zone (EPZ). A map of the Callaway Nuclear Plant EPZ is provided in Attachment D to this Appendix. The State of Missouri as well as the utility company have developed emergency operations plans to ensure the health and safety of the general population within the emergency planning zones.

The northern part of Phelps County lies within the ingestion exposure pathway of the Callaway Nuclear Plant. The ingestion exposure pathway is the area within a 50-mile radius around a commercial nuclear power plant in which people may be indirectly exposed to radiation by eating or drinking contaminated food, milk, and water. The safety of the food supply within the 50-mile ingestion exposure pathway could also be a concern to members of the agricultural community if a radiological release to the atmosphere occurred. This could affect dairy farms, dairy processing plants, egg processors and distributors, grain warehouses, meat processing plants, commercial fruit and vegetable producers. The agricultural community would be notified and advised on what actions to take in the event of a radiological emergency.

I. Public Health Emergency

Public health emergencies can take many forms - disease epidemics, large-scale incidents of food or water contamination, or extended periods without adequate water and sewer services. There can also be harmful exposure to chemical, radiological or biological agents, and large-scale infestations of disease-carrying insects or rodents - to name just a few. Public health emergencies can occur as primary events by themselves, or they may be secondary events to another disaster or emergency, such as flood, tornado, or hazardous material incident. The common characteristic of most public health emergencies is that they adversely impact, or have the potential to adversely impact, a large number of people. They can be statewide, regional, or localized.

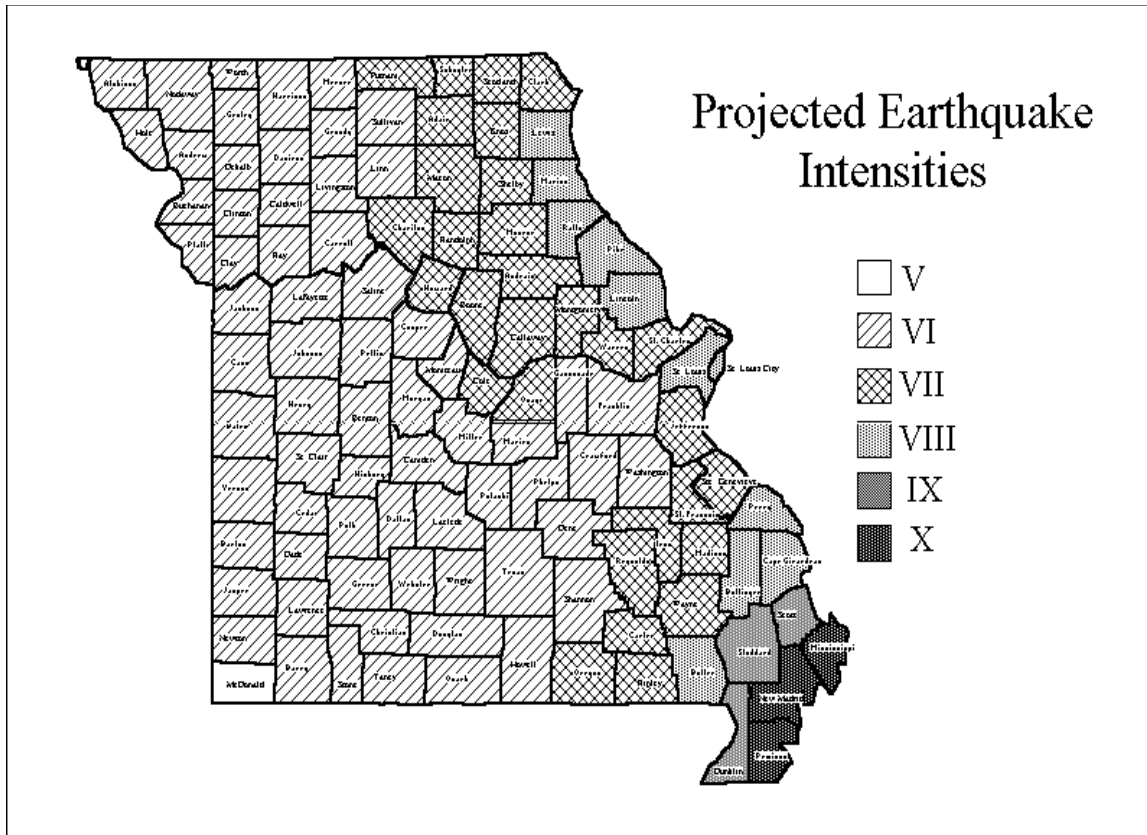
In particular, two public health hazards have recently emerged as issues of great concern, with far reaching consequences. One would be the intentional release of a radiological, chemical, or biological agent, as a terrorist act of sabotage, to adversely impact a large number of people. The second hazard would be a deadly flu outbreak (influenza pandemic) that could kill or sicken thousands of people across the country or around the globe, as in the case of the Spanish Flu epidemic of 1918-19. Such a pandemic could occur either by a natural means, or man-caused as a bio-chemical terrorist activity.

Attachment A
Appendix 5 to the Basic Plan

EARTHQUAKE RESPONSE

- A. The New Madrid Seismic Zone is centered in Southeast Missouri and northeast Arkansas, but extends into parts of Illinois, Indiana, Kentucky, Mississippi and Tennessee. The region is considered to pose the greatest danger and have the highest seismicity level of any area east of the Rocky Mountains. Due to the geology of the area, damages could be spread over a large area of the Central United States.
- B. Addendum 1 to this appendix illustrates the projected Modified Mercalli intensities for Missouri should a 7.6 magnitude earthquake occur anywhere along the New Madrid Seismic Zone. Phelps County can expect to feel the effects of a VI intensity on the Modified Mercalli scale. See Addendum 1 to this Attachment for a list of these effects for Phelps County.
- C. A major earthquake could cause massive casualties and injuries, as well as severe damage to private and public property. (Most casualties and injuries are due to falling objects and debris, not from the actual movement of the ground.) Railroads, highways, bridges, telecommunications, and utilities could also be severely damaged. An earthquake could trigger secondary events such as explosions, fires, landslides, flooding, liquefaction and hazardous materials releases. Natural gas and petroleum pipelines could rupture, causing fires and explosions. Dam failures are also likely to follow a major earthquake.
- D. A major earthquake would overwhelm a local jurisdiction's ability to adequately respond to the situation.
- E. Earthquakes are more likely to hinder emergency operations than most other disasters or emergencies (i.e., difficulties coordinating services and acquiring resources could be much more critical).
- F. Access to and from the damaged area may be severely restricted for hours at least, if not days. Communications and life-support systems may be severely hampered or destroyed.
- G. Seismic caused ground motions and its resulting damage may vary within a geographical region. There could be heavy damage in one area and only slight damage in another area. Initial reports of the earthquake may not reflect the true nature of the problem.
- H. A catastrophic earthquake would result in an immediate declaration of a "State of Emergency" by the Governor, followed later by a Presidential Disaster Declaration. This would allow state and federal emergency operations to begin.
- I. Local jurisdictions may have to "go it alone" for the first 72 hours after an earthquake, before state and federal assistance arrives.

PROJECTED EARTHQUAKE INTENSITIES



This map shows the highest projected Modified Mercalli intensities by county from a potential magnitude 7.6 earthquake whose epicenter could be anywhere along the length of the New Madrid seismic zone.

Earthquake effects - Intensity VI: Everyone feels movement. Poorly built buildings are damaged slightly. Considerable quantities of dishes and glassware, and some windows are broken. People have trouble walking. Pictures fall off walls. Objects fall from shelves. Plaster in walls might crack. Some furniture is overturned. Small bells in churches, chapels and schools ring.

Attachment B
Appendix 5 to the Basic Plan

PHELPS COUNTY DAM INVENTORY

<u>Map*</u> <u>ID No.</u>	<u>Dam</u> <u>ID No.</u>	<u>Name of Dam</u>	<u>Dam</u> <u>Height</u>	<u>Reservoir/ Lake Area</u>	<u>Hazard**</u>
1	MO30013	Highway Lake Dam	33	15	Low
2	MO30090	Little Prairie Dam	48	100	High
3	MO30090	Lake Scioto	44	10	Significant
4	MO30098	Brays Lake Dam	79	96	High
5	MO30130	Wheelgate Lake Dam	27	5	Low
6	MO30243	Moty Lake Dam	29	11	Low
7	MO30244	Amos Lake Dam	27	10	Low
8	MO30257	Cardetti Lake Dam	25	14	Significant
9	MO30259	Seven Springs Lake Dam	32	20	Low
10	MO30345	Tripoli Valley Dam	26	6	High
11	MO30389	Scott's Pond Dam	21	18	Significant
12	MO30391	Martin Lake Dam	19	8	Low
13	MO31022	Foster Lake Dam	30	3	Low
14	MO31335	Walnut Hill Lake Dam	20	8	Significant
15	MO31336	Affolter Lake Dam	30	2	Significant
16	MO31513	McCloskey Lake Dam	25	4	Low
17	MO31515	Egan Lake Dam	30	5	Low
18	MO31516	Seliga Lake Dam	22	8	Low
19	MO31517	Bedell Lake Dam	25	5	Low
20	MO31537	Boyd Lake Dam	25	5	Low
21	MO31538	Blues Pond Dam	23	8	High
22	MO31546	Dennis Lake Dam	25	6	Significant
23	MO31547	Knoblauch Lake Dam	25	18	Significant
24	MO31577	Harke Lake Dam	25	6	Low
25	MO31777	Wayman-Fuhring Lake Dam	30	6	Low
--	MO31915	McNulty Lake Dam	34	27	Significant
--	MO30258	Ashby Lake Dam	30	5	Low
--	MO30050	Essie Dam	20	7	Low
--	MO32003	DeWitt Pond	15	--	--

* Map identification number corresponds to the map of dams in Addendum 1 to this Attachment.

** The hazard rating is based on the contents of the downstream environment zone (permanent dwellings, public buildings, campgrounds with permanent water/sewer/electrical services, industrial buildings, etc.).

Attachment C
Appendix 5 to the Basic Plan

NATIONAL FLOOD INSURANCE PROGRAM INFORMATION

<u>Community Name</u>	<u>NFIP Status</u>	<u>Special Flood Hazard</u>	<u>Date on which Sanctions apply</u>	<u>Policies</u>
Phelps County (unincorporated area)	Yes/R	Yes		74
Doolittle	Yes/R	Rescinded		0
Edgar Springs	Yes/R	Rescinded		0
Newburg	Yes/R	Yes		11
Rolla	Yes/R	Yes		89
St. James	Yes/R	Yes		7

KEY: NFIP: National Flood Insurance Program
R: Indicates entry in Regular Program
Rescinded: Flood map is no longer in effect.

NOTE: Due to the quantity and size of flood maps available for Phelps County and the municipalities, they are not reproduced in this plan. Copies of the county flood maps are available at the Phelps County Courthouse. Copies of the maps for the cities are available at each City Hall.

Attachment D
Appendix 5 to the Basic Plan

**CALLAWAY NUCLEAR PLANT
EMERGENCY PLANNING ZONES
2, 5, 10 AND 50 MILES**



Appendix 6 to the Basic Plan

**EMERGENCY GOVERNMENT PROCLAMATION
OF A STATE OF EMERGENCY**

WHEREAS, (identify city and/or Phelps County), Missouri, has encountered _____ conditions, and a threat exists to the lives and property of the people of (identify city and/or Phelps County), Missouri, and;

WHEREAS, that areas within the boundaries of (identify city and/or Phelps County), Missouri, are immediately threatened with _____ and curtailing the protection of the lives and property contained in (identify city and/or Phelps County), Missouri, and an emergency exists:

NOW THEREFORE, I/we (identify Mayor of city and/or County Commissioners of Phelps County), Missouri, hereby declare that a state of emergency exists in (identify city and/or Phelps County), Missouri, and I/we hereby invoke and declare in full force and effect in (identify city and/or Phelps County), Missouri, all laws, statutes, of the State of Missouri, (identify city and/or Phelps County), for the exercise of all necessary emergency authority for the protection of the lives and property of the people of (identify city and/or Phelps County), Missouri, and the restoration of local government with a minimum of interruption.

As pursuant with Chapter 44 of the Revised Missouri State Statutes, and (identify city ordinances and/or County Court Orders) as pertinent to:
_____.

All public offices and employees of (identify city and/or Phelps County), Missouri, are hereby directed to exercise the utmost diligence in discharge of duties required of them for the duration of the emergency and in the execution of emergency laws, regulations, and directives state, and local.

All citizens are called upon and directed to comply with necessary emergency measures, to cooperate with public officials and the (identify city and/or Phelps County), Missouri, Emergency Management Agency forces in executing emergency operational plans, and to obey and comply with the lawful directions of properly identified public offices.

In witness, I/we have hereunto set my/our hand at _____ hours, the ____ day of _____, 20__ A.D.

Mayor and/or County Commissioners